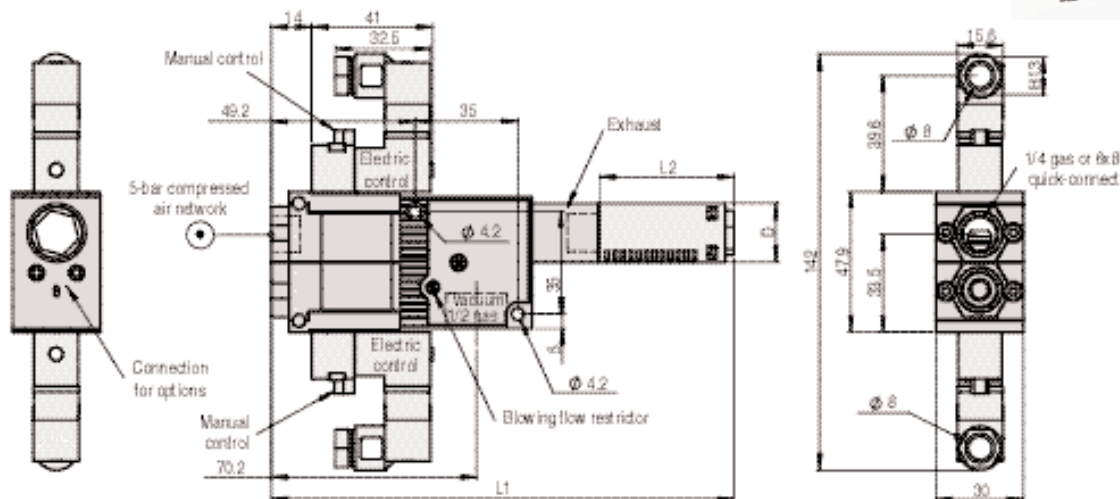
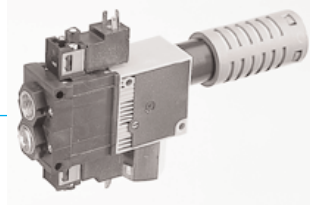


Venturis with gripping & blow-off control, series GVPD



1/4 Gas

Tube 6x8

Applications:

Vacuum generators in series GVPD control **vacuum generation and blowing** (with adjustable flow rate). The control of blowing, in terms of **power and time**, speeds up gripping/releasing rates, allows parts to be cleaned before gripping, and improves release for large diameter suction cups.

Characteristics:

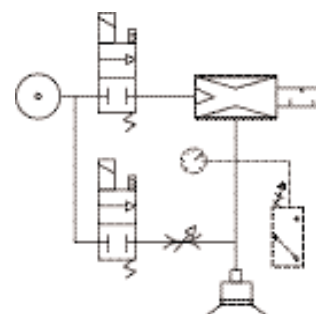
Characteristics	Nozzle ø	Air consumption	Max. vacuum as %			Drawn-in air NI/min			D mm		D1 Gas		L1* mm		L2 mm			
			X	T	N	X	T	N	X	N/T	X	N/T	X	N/T	S	K(N/T)	K(X)	
Models	mm	NI/min																
GVPD 12	1.2	67	40	75	90	150	63	45	30	20	1/2	1/4	191.2	158.2	45	68	121	
GVPD 15	1.5	100	50	75	90	180	95	70	30	20	1/2	1/4	191.2	168.2	45	68	121	
GVPD 20	2	180	50	75	90	250	160	125	30	30	1/2	1/2	229.2	168.2	60	121	121	
GVPD 25	2.5	270	50	75	90	360	240	200	30	30	1/2	1/2	229.2	168.2	60	121	121	
GVPD 30	3	400	50	75	90	450	330	265	30	30	1/2	1/2	301.2	301.2	-	121	121	

On standard basis, versions N and T are supplied with silencer S and version X is supplied with silencer K, except for model GVP 30 which is always equipped with silencer K.

(*) L1 equipped with standard silencer

Specifications:

Compressed air	Filtered, non-lubricated, 2 to 6 bars
N° of valve operations	15 million
Operating frequency	2 Hz maximum
Valve function	N.C.
Valve function	N.O. at 24 V DC on request
Valve/body material	DELTRIN 100
Optimal pressure	5 bars
Blowing flow rate	30 NI/min closed, 260 NI/min open



Options:

See pages 28 to 31.

GVPD		1	2	3	4	5	
		1: Nozzle	2: Characteristics	3: Silencer	4: C.A. coupling	5: Control	
12	1.2 mm	X	50% vacuum	-	Without silencer	P1	Pneumatic
15	1.5 mm	T	75% vacuum	S	Large reduction in dB	E1	24 V DC, N.C.
20	2 mm	N	90% vacuum	K	Through type	E2	220 V - 50 Hz
25	2.5 mm					E3	24 V AC
30	3 mm					E6	24 V DC, N.O.
						E..	Others, page 37

Note: Versions N and T: silencer S and K • Version X: silencer K
Curves and characteristics on pages 33 and 34.